

Speaker Connectors

The LK 08, LK 09, and LKA 16 series of connectors are ideal for portable speaker applications. Based on the LK Series MIL-SPEC designs, these connectors are extremely robust, IP rated, and available with impact resistant rubber locking rings. The LK 08 series is fully compatible with popular CA-COM configurations.

LK 08 and LK 09 Features

- 8 or 9 (4 on request) crimp or solder gold pins in male/female panel and cable versions
- Intermateable with CA-COM style connectors
- Audible snap in quick bayonet lock
- Cable version with easy-grip long metal locking ring
- Roller studs for easier coupling
- M32x1.5 cable strain relief with locknut as standard

LK 16 Features

- Also available in a 19 pins version as utilized by D&B
- 16 crimp or solder gold pins in male/female panel and cable versions
- Intermateable with Socapex style connectors
- Silk screen identification
- PG29 cable strain relief as standard

Common Features

- Easy and error-free mating for fast connections
- Excellent resistance against accidental unlocking caused by shocks and vibrations
- Body made of high quality aluminium with resistant black finishing
- Guaranteed for over 2000 coupling operations
- IP68 rated when mated

Options

- Black and colored (blue, red, green, yellow) rubber locking rings
- Male and female connector dust caps



LKI Speaker connectors are fully intermateable with CA-COM style connectors and are becoming increasingly popular with leading loudspeaker manufacturers due to their robust construction ideal for touring applications.



LKA 16 (crimp pins) and **LKI 16** (solder pins) connectors are based on standard LKS Socapex style connectors but have been adapted to use only 16 pins, following indications from the largest rental companies. The standard Socapex style LKS 19 pin connector is also available, as utilized by D&B. Rubber locking ring available on both bayonet style and screw coupling connectors.

The **LKI 08 adapter** features a male and female LKI 08 connector mounted back to back without locking rings. It enables the connection of two 8 pin extension cables, thus obtaining the desired length needed.



LK 08 Connectors

Cable mounting
with rubber locking ring

Male reverse

LK* 08R MV P 8 poles gold pins**LK* 08R MV P **** 8 poles gold pins

Items subject to Minimum Order Qty

Female

LK* 08 FV P 8 poles gold pins**LK* 08 FV P **** 8 poles gold pins

Items subject to Minimum Order Qty

Cable mounting
with locking ring

Male reverse

LK* 08R MV 8 poles gold pins

Female

LK* 08 FV 8 poles gold pins

Panel mounting

Female reverse

**LK* 08R FP** 8 poles gold pins

Adapter

**LK 08 EXT** 08 Adapter

Configurations on request only:



Cable mounting male

Cable mounting female reverse



Panel mounting male

LK 09 Connectors

Cable mounting

Male

**LK* 09 MV** 9 poles gold pins

Panel mounting

Male

**LK* 09 MP** 9 poles gold pins

Female

**LK* 09 FV** 9 poles gold pins

Female

**LK* 09 FP** 9 poles gold pinsCable mounting
with rubber locking ring

Female

**LK* 09 FV P** 9 poles gold pins

* Use letter "A" to order crimp version or "I" for solder version connectors

** Rubber locking ring color

Accessories

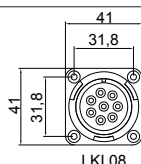
Dust cap

**LK 22 TPMN** LK 08 without locking ring**LK 22 TPFN** LK 08 with locking ring**LK 20 TPMN** LK 09 without locking ring**LK 20 TPFN** LK 09 with locking ring

Rubber locking ring

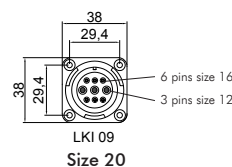
**LK 20 RL **** For LK 09**LK 22 RL **** For LK 08

Items subject to Minimum Order Qty

****** **B** Blue **R** Red **G** Green **Y** Yellow


LK 08

Size 22 - 8 pins size 12

LK 09
Size 20